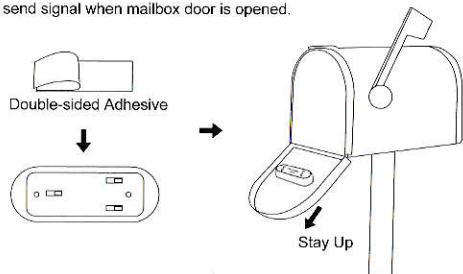

 Note: the learning code receiver needs to be recoded if you want to add extra transmitters.

#### For Transmitter:

Stick it on the bracket with double-sided adhesive and stick it on the mailbox door. Install transmitter on the bracket with right direction. It will send signal when mailbox door is opened.



 Note: Please test functions after installation.

#### Operating Instruction

1. Select mailbox prompt tone: Press the light cover 5 seconds each time to choose the prompt tone. There are 3 tones to choose from. You will hear prompt tone along with "Ding" sound when mailbox is opened.
2. If you missed the instant notification when mailbox was opened, the orange flashing light slowly reminds you that there is a new mail. Short press the light cover to remove the reminds and wait for new mails.
3. Pairing mailbox transmitter procedure: a) Long press the volume button on the receiver for 5 seconds until you hear a sound and see orange flashing light. b) Turn your mailbox transmitter over at the same time. c) It is successful if you hear "Ding" and mailbox prompt tone. d) Turn your mailbox transmitter over again to confirm the pairing is done.
4. Pairing receiver with extra transmitters, like doorbell push button, door sensor, etc.. (This function needs to be equipped with the above transmitter, this mailbox transmitter does not have this function)
  - a) Short press the music button to choose music from 58 melodies.
  - b) Long press the volume button on the receiver for 5 seconds until you hear a sound and see orange flashing light.
  - c) Trigger your transmitter at the same time.
  - d) It is successful if you hear the music that you chosen.

- e) Trigger your transmitter again to confirm the pairing is done.
5. Reset: Long press the music button for 5 seconds until you hear a sound. All transmitters bound to receiver will be cleaned.

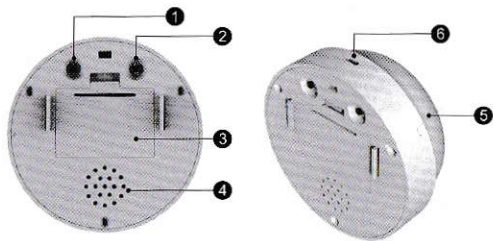
#### Warning

1. You'd better use the high quality battery, avoid using the ones with short life and easy leakage of electrolyte.
2. Be sure to protect the precision electronic components, and non-professionals are not allowed to open it for maintenance.

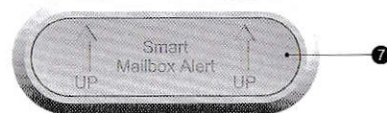
#### Trouble Shooting

1. The receiver doesn't sound.
  - Check whether the power supply of the receiver is working.
  - Check the mailbox transmitter battery, and if necessary, replace the battery.
  - The receiver may not be paired with the mailbox transmitter.

### Structure Diagram



1. Volume Button/Paring Button
2. Music Button/Reset Button
3. Battery Cover
4. Speaker
5. Light Cover/Select Mailbox Prompt Tone
6. 5V USB Port



7. Mailbox Sensor/Transmitter

### Notice Before Installation

Mailbox alert relies on wireless radio technology which is subject to physical and environmental considerations. These products do not have an out of range function and as such should be tested periodically in the setting in which they are to be used to understand their area of effective operation.

1. Please install receiver as close to the mailbox transmitter as possible.
2. Radio signal will be affected by metal, wall, concrete and barrier etc., please first test whether the operation range you choose is proper before install them.
3. Please install the receivers away from induction cooker, television and horn wherethere is interference of magnetic and signal.